

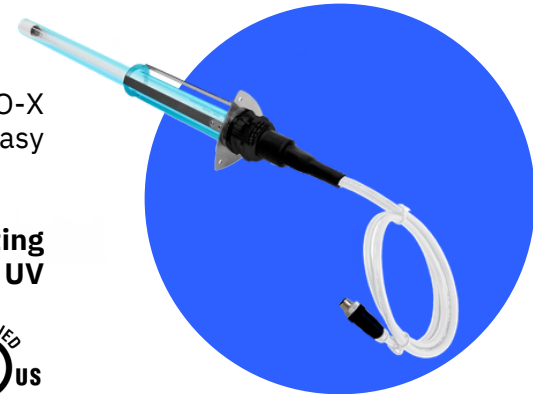


THE EFFECTIVE, EASY FIT.

Adding a UV device at any stage along AC is always useful, UV STYLO-X is the **simplest and most versatile solution** with its minimal size, easy and flexible installation as one unit or more units combined.

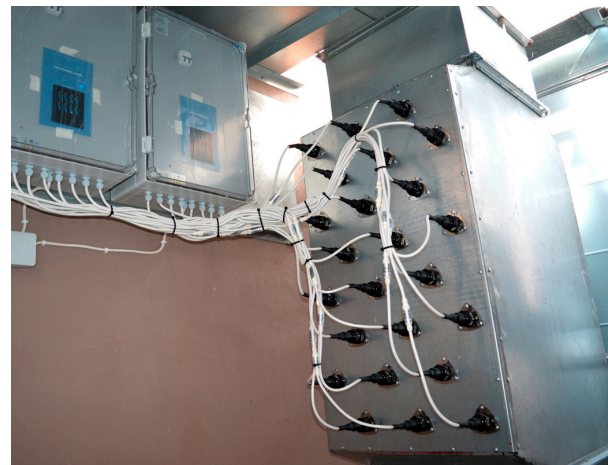
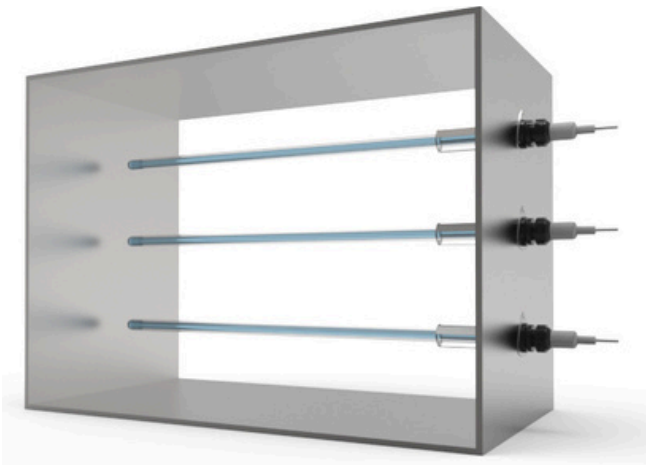
Lamp replacement and maintenance can be done **without dismantling the system from the duct**. Install as many as you want and **create UV section in any AC system**.

UL-certified version available.



KEY PRODUCT FEATURES

- **Ideal for Retrofit**, modules with Flange, easy to install in any ductwork, with many sizes and wattages available.
- **Combine More Devices** and organize them to build your disinfection solution.
- **Increased Disinfection Performance**, with a High-Output UV-C lamp (253,7 nm) enclosed in a Quartz Sleeve, to increase disinfection performances and protect the lamp from temperatures fluctuations.
- **Built to Last**, with high-quality **Stainless Steel AISI 304**, all material are tested to resist UV.
- **Optimized Efficacy with TiOx[®] filter**, which contributes significantly to the deodorizing action of UV-C. (optional)
- **Choose the Best Power Supply options**, from a simple open frame ballast to a separate control board available for advanced management of multiple lamps.



HEALTHCARE



HVAC



PROCESS
INDUSTRY



HOSPITALITY



SHARED
SPACES



PUBLIC
VENUES



WELLNESS
CENTRES



TRANSPORT

TECHNICAL TABLE	UV-STYLO-X-11-C	UV-STYLO-X-16-C	UV-STYLO-X-25-C	UV-STYLO-X-40H-C	UV-STYLO-X-60H-C	UV-STYLO-X-90H-C	UV-STYLO-X-120H-C
REPLACEMENT LAMP	GH2-11W-QC	GH3-16W-QC	GH5-25W-QC	GH4-40WH-QC	GH6-60WH-QC	GH9-90WH-QC	GH11-120WH-QC
POWER CONSUMPTION	11W	16W	25W	40W	60W	90W	120W
LAMP SIZE (length inside the duct)	mm 196 (in 7.71)	mm 272 (in 10.70)	mm 500 (in 19.52)	mm 397 (in 15.63)	mm 541 (in 21.29)	mm 851 (in 33.50)	mm 1132 (in 44.56)
FLANGE ATTCHMENT (HxW)	mm 77x75 (in 3.03 x 2.95)						
EXTERNAL FLANGE SIZE	mm D=47 L=100 (in D=1.85 L= 3.93)						
WEIGHT	kg 0,3 lb 0.66	kg 0,4 lb 0.88	kg 0,75 lb 1.65	kg 0,70 lb 1.54	kg 0,75 lb 1.65	kg 0,80 lb 1.76	kg 1,00 lb 2.20
AIR FLOW RATE **	m³/h 120-320 (CFM 70.63-188.34)	m³/h 170-450 (CFM 100.06-264.86)	m³/h 250-600 (CFM 264.86-353.14)	m³/h 380-1000 (CFM 223.66-588.58)	m³/h 650-1700 (CFM 382.58-1,000.58)	m³/h 900-2400 (CFM 529.72-1,412.59)	m³/h 1.100-2.900 (CFM 647.44-1,706.88)
FOR ALL MODELS							
LAMP LIFE (hours)*	≤ 18.000						
REPLACEMENT LAMP	IP 40						
OP. TEMPERATURE***	MIN. -15°C ÷ MAX. +40°C (MIN. 5.0°F ÷ MAX. +104.0°F)						
OP. RELATIVE HUMIDITY***	From 20 to max. 90%						
ELECTRICAL CONNECTION	Lamp-side cable (4x1 mm2), length 0,4m, with male c connector M12. EXTENSION CABLE "C-CABLE" MANDATORY (1.5, 5 or 10 meters)						

* Useful life can be substantially reduced by several environmental or technical factors

** At 2,5 m/s (or 492 fpm) air speed

*** Outside of these ranges, performance may not be optimal

TROUBLE-FREE INTEGRATION AND INSTALLATION



- Mounting and powering the device can be done without complex requirements.
- Ongoing maintenance only takes a few minutes to replace lamps when necessary.

SOFTWARE ENGINEERED DISINFECTION

From our in-depth know-how on the subject and with our proprietary dosage calculation software we can simulate device performance and validate effectiveness in every application.

Calculation Software



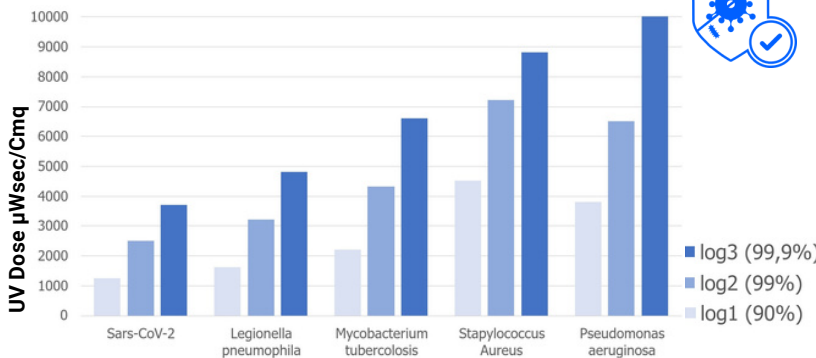
VIEW or DOWNLOAD now



TECHNICAL DRAWINGS

Every Light Progress Product is available in detailed DWG and STEP files for your design-in and specification clarity.

MICROBIAL TESTS AND EFFICACY



Up-to log₃ microbial reduction on Airflow, Coils and HVAC surfaces, 24 hours a day.

Light Progress customers rely on our extensive history of third party testing and proven efficacy to meet any level of disinfection validated against literally any virus or microorganism.

We understand your need to meet Regulatory Requirements and Industrial Standards as we help you achieve microbial load reduction using our UV systems.

Light Progress Group SRL
Anghiari (AR)
ITALIA
P: (+39) 0575 749255
E: info@lightprogress.it
W: www.lightprogress.it

Light Progress GmbH
Aschaffenburg (BY)
DEUTSCHLAND
P: +49 176 761 42327
E: gmbh@lightprogress.de
W: www.lightprogress.de

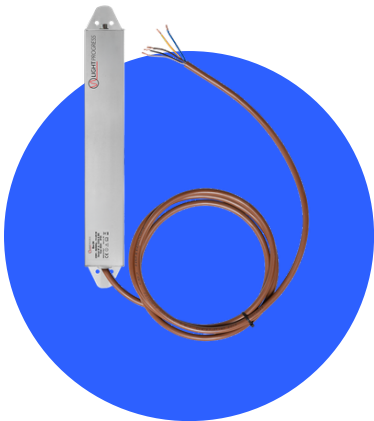
Light Progress LLC
Dallas, (TX)
USA
P: (+1) 833-882-4255
E: americas@lightprogress.it
W: www.lightprogress.us

OFFICIALLY DISTRIBUTED BY:

POWER SUPPLY OPTIONS FOR PROFESSIONAL SYSTEMS

Lamp monitoring, connectivity and flexibility for customized applications.

SUPPLY BOX "BA" BASIC SINGLE LAMP SOLUTION



The **Supply Box "Ba"** is a **reliable and straightforward power supply unit** designed for individual UV-C lamp operation, featuring integrated alarm functionality for basic system monitoring.

- **Single device solution:** dedicated power supply and faulty lamp alarm for one UV-C lamp.
- **Faulty lamp alarm:** dry contact output to connect to existing control panels and BMS.
- **IP55 protected:** against dust ingress and water jets.
- **Easy connection:** M12-F connector on lamp-side.

SUPPLY BOX "SB-X" MULTI-LAMP POWER AND MONITORING UNIT

The **Supply Box SB-nX** is a simple and accessible **control and power supply unit for managing multiple UV-C devices** in a single system with centralized, reliable power distribution.

- **Multiple device solution:** dedicated power supply and monitoring for up to 6 UV-C lamps.
- **Faulty lamp alarm:** dry contact output to connect to existing control panels and BMS.
- **Safety switch:** low voltage input from existing control panels and BMS, switches off UV lamps when needed.
- **IP67 (IK08) protected:** against dust, water and mechanical impacts.
- Easy connection: **M12-F connector** on lamp-side.





CONTROL BOARD "MASTER-STY" COMPLETE MULTI-LAMP MANAGEMENT SYSTEM



The **Control Board "Master"** is an advanced control and monitoring unit designed for **multi-lamp UV-C systems**, providing a **digital display, operating hour counter** with **exhaust lamp alarm** and synoptic layout.

- **Multiple device solution:** dedicated power supply and monitoring for up to 12 UV-C lamps.
- **Faulty lamp alarm:** LED indicator and dry contact output to connect to existing control panels and BMS.
- **Safety switch:** low voltage input from existing control panels and BMS, switches off UV lamps when needed.
- **IP45 or IP66/67 protected:** against solid objects and water splashes, or complete dust protection and powerful water jets.
- Easy connection: **M12-F connector** on lamp-side.
- **Exhaust lamp alarm:** with hour counter, digital display, and dry contact output to connect to existing control panels and BMS.
- **Synoptic layout:** to monitor the status of each connected UV-C lamp.

TECHNICAL TABLE								
	SUPPLY BOX "Ba"		SUPPLY BOX "SB-nX"			CONTROL BOARD "MASTER-STY-S"		
MAIN FEATURES								
MODEL	Ba40UL	Ba-150H-NI	SB-2X	SB-4X	SB-6X	-4/nn-P	-8/nn-P	-12/nn-P
COMPATIBLE UVC DEVICE (W)	11 ÷ 16	40÷150 HO	40÷150 HO	40÷150 HO	40÷150 HO	11 ÷ 16 40÷150 HO		
CONTROL OF MULTIPLE DEVICES	1 device		up to 2 devices	up to 4 devices	up to 6 devices	up to 4 devices	up to 8 devices	up to 12 devices
FAULTY LAMP ALARM	Dry contact output * (up to 24 V, 500 mA)		Dry contact output * (up to 30V, 500mA)			LED indicator Dry contact output * (up to 230V, 1A)		
EXHAUST LAMP ALARM	-		Optional LED indicator (-DUV) Optional Dry contact output * (up to 30V, 500mA) (-DUV)			LED indicator Dry contact output * (up to 230V, 1A)		
LAMP LIFE HOUR COUNTER	-		Optional Digital Display (-DUV)			Digital Display		
SAFETY INPUT contact from BMS or Safety Switch	-		Low voltage input			Low voltage input		
SYNOPTIC SCHEME	-		-			LED indicator		
POWER CABLE connection to the mains	2,5 m (5x1 mm ²) included		Three-core cable 2P+E (not included)			Three-core cable 2P+E (not included)		
CONNECTION PLUG on lamp side	M12-F		M12-F			M12-F		
INSTALLATION Mounting options	Screws (included) Optional magnetic supports (- STMG)		Screws (not included)			Screws (not included)		
TECHNICAL FEATURES								
MODEL	Ba40UL	Ba-150H-NI	SB-2X	SB-4X	SB-6X	-4/nn-P	-8/nn-P	-12/nn-P
ELECTRONIC CONTROL GEARS ON BOARD	1		2	4	6	up to 4	up to 8	up to 12
DIMENSIONS (mm) (W x H x D)	433x58x37		410x315x150			408x326x180	613x400x230	742x530x255
DIMENSIONS (in) (W x H x D)	17 " x 2 1/4" x 1 1/2"		16 1/8" x 12 3/8" x 5 7/8"			16 1/8" x 12 7/8" x 7 1/8"	24 1/8" x 15 3/4" x 9"	29 1/4" x 20 7/8" x 10"
WEIGHT	kg 0,85 (lb 1.87)	kg 0,9 (lb 2)	kg 6,4 (lb 14)	kg 7,5 (lb 17)	kg 8,6 (lb 19)	kg 9 (lb 20)	kg 13.5 (lb 30)	kg 23 (lb 51)
HOUSING MATERIAL	Aluminum		Corrosion-resistant Aluminum			ABS with transparent cover		
OPERATING TEMPERATURE**	min. -15°C ÷ max. +40°C (min. 5.0°F ÷ max. +104.0°F)		min. -15°C ÷ max. +40°C (min. 5.0°F ÷ max. +104.0°F)			min. -15°C ÷ max. +40°C (min. 5.0°F ÷ max. +104.0°F)		
PROTECTION	IP55		IP67 (IK08)			IP66/67		
V AC FREQUENCY	110-277V - 50/60Hz	110-240V 50/60Hz	110-240V 50/60Hz			220-240V 50/60 Hz or 110-277V 50/60Hz or 220-277V 50/60Hz		

* Dry contact output to be externally powered - to activate an external diagnostic system (BMS, MMS, SCADA, DCS, PLC)

** Outside of these ranges, performance may not be optimal