

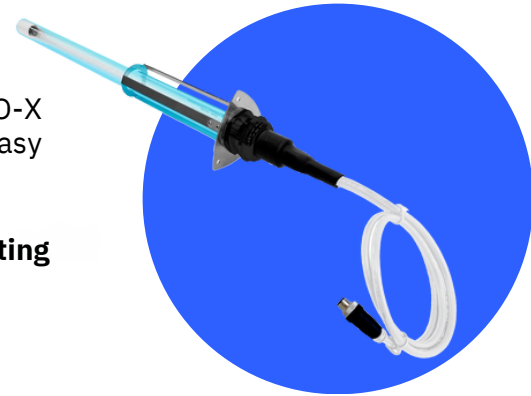


THE EFFECTIVE, EASY FIT.

Adding a UV device at any stage along AC is always useful, UV STYLO-X is the **simplest and most versatile solution** with its minimal size, easy and flexible installation as one unit or more units combined.

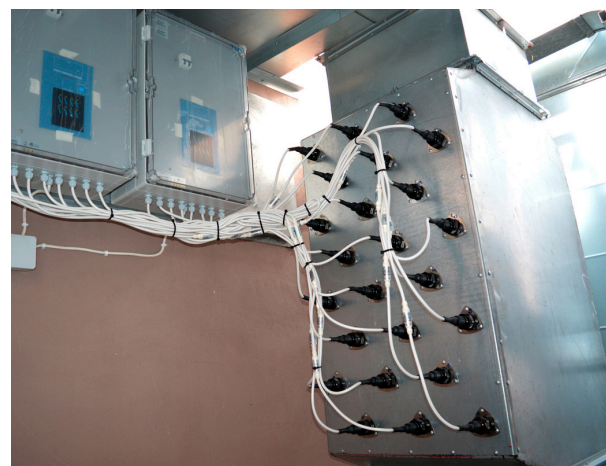
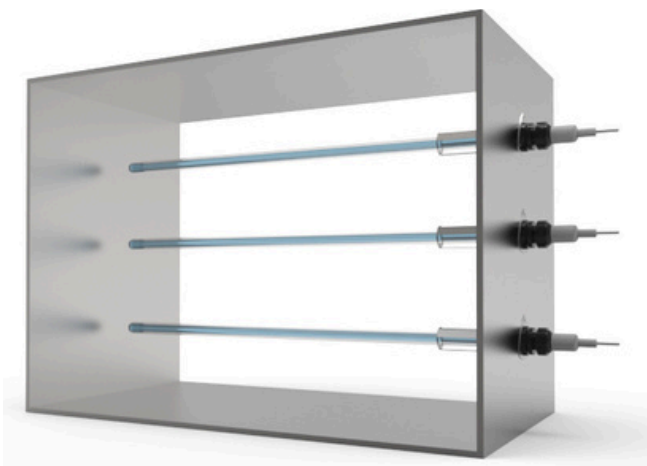
Lamp replacement and **maintenance can be done without dismounting** the system from the duct.

Install as many as you want and create UV section in any AC system.



KEY PRODUCT FEATURES

- **Ideal for Retrofit**, modules with Flange, easy to install in any ductwork, with many sizes and wattages available.
- **Combine More Devices** and organize them to build your disinfection solution.
- **Increased Disinfection Performance**, with a High-Output UV-C lamp (253,7 nm) enclosed in a Quartz Sleeve, to increase disinfection performances and protect the lamp from temperatures fluctuations.
- **Built to Last, with high-quality Stainless Steel AISI 304**, all material are tested to resist UV.
- **Protected, IP40 Rating**, UVLON™ available to avoid glass falling.
- **Optimized Efficacy with TiOx® filter**, which contributes significantly to the deodorizing action of UV-C. (optional)
- **Choose the Best Power Supply options**, from a simple open frame ballast to a separate control board available for advanced management of multiple lamps.



HEALTHCARE



HVAC



PROCESS
INDUSTRY



HOSPITALITY



SHARED
SPACES



PUBLIC
VENUES



WELLNESS
CENTRES



TRANSPORT

TECHNICAL TABLE

	UV-STYLO-X-11-C	UV-STYLO-X-16-C	UV-STYLO-X-25-C	UV-STYLO-X-40H-C	UV-STYLO-X-60H-C	UV-STYLO-X-90H-C	UV-STYLO-X-120H-C
REPLACEMENT LAMP	GH2-11W-QC	GH3-16W-QC	GH5-25W-QC	GH4-40WH-QC	GH6-60WH-QC	GH9-90WH-QC	GH11-120WH-QC
POWER CONSUMPTION	11W	16W	25W	40W	60W	90W	120W
LAMP SIZE (length inside the duct)	mm 196 (in 7.71)	mm 272 (in 10.70)	mm 500 (in 19.52)	mm 397 (in 15.63)	mm 541 (in 21.29)	mm 851 (in 33.50)	mm 1132 (in 44.56)
FLANGE ATTCHMENT (HxW)	mm 77x75 (in 3.03 x 2.95)						
EXTERNAL FLANGE SIZE	mm D=47 L=100 (in D=1.85 L= 3.93)						
WEIGHT	kg 0,3 lb 0.66	kg 0,4 lb 0.88	kg 0,75 lb 1.65	kg 0,70 lb 1.54	kg 0,75 lb 1.65	kg 0,80 lb 1.76	kg 1,00 lb 2.20
AIR FLOW RATE **	m³/h 120-320 (CFM 70.63-188.34)	m³/h 170-450 (CFM 100.06-264.86)	m³/h 250-600 (CFM 264.86-353.14)	m³/h 380-1000 (CFM 223.66-588.58)	m³/h 650-1700 (CFM 382.58-1,000.58)	m³/h 900-2400 (CFM 529.72-1,412.59)	m³/h 1.100-2.900 (CFM 647.44-1,706.88)
FOR ALL MODELS							
LAMP LIFE (hours)*	≤ 18.000						
REPLACEMENT LAMP	IP 40						
OP. TEMPERATURE***	MIN. -15°C ÷ MAX. +40°C (MIN. 5.0°F ÷ MAX. +104.0°F)						
OP. RELATIVE HUMIDITY***	From 20 to max. 90%						
VAC FREQUENCY	230V or 110-277V 50/60 Hz						
POWER SUPPLY	2 Options available, including Control Board for the management of multiple lamps, with power supply, access security, hour counter, UV lamp fault control and LED synoptic						
ELECTRICAL CONNECTION	Lamp-side cable (4x1 mm2), length 0,4m, with male c connector M12. EXTENSION CABLE CCABLE1.5 (length 1.5 m.) RECOMMENDED						

* Continuous operation

** At 2,5 m/s (or 492 fpm) air speed

*** Outside of these ranges, performance may not be optimal

TROUBLE-FREE INTEGRATION AND INSTALLATION



- We provide the optimal point of integration for every product without requiring changes to your system.
- Mounting and powering the device can be done without complex requirements.
- Ongoing maintenance only takes a few minutes to replace lamps when necessary.

SOFTWARE ENGINEERED DISINFECTION

From our in-depth know-how on the subject and with our proprietary dosage calculation software we can simulate device performance and validate effectiveness in every application.

Calculation Software



TECHNICAL DRAWINGS

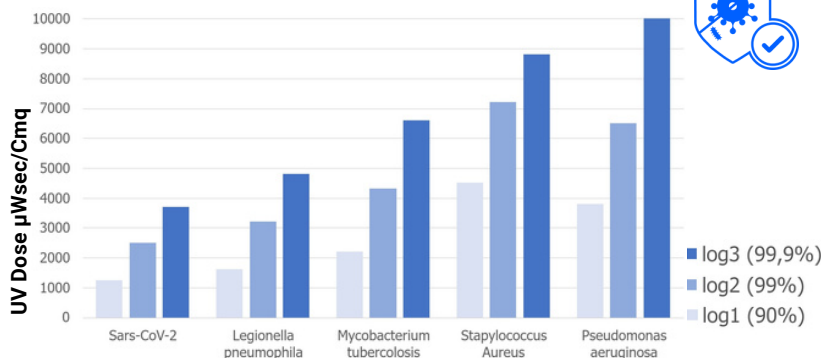
Every Light Progress Product is available in detailed DWG and STEP files for your design-in and specification clarity.

VIEW or DOWNLOAD now



CLICK
HERE

MICROBIAL TESTS AND EFFICACY



Up-to log3 microbial reduction on Airflow, Coils and HVAC surfaces, 24 hours a day.

Light Progress customers rely on our extensive history of third party testing and proven efficacy to meet any level of disinfection validated against literally any virus or microorganism.

We understand your need to meet Regulatory Requirements and Industrial Standards as we help you achieve microbial load reduction using our UV systems.

Light Progress Group SRL
Anghiari (AR)
ITALIA
P: (+39) 0575 749255
E: info@lightprogress.it
W: www.lightprogress.it

Light Progress GmbH
Aschaffenburg (BY)
DEUTSCHLAND
P: +49 176 761 42327
E: gmbh@lightprogress.de
W: www.lightprogress.de

Light Progress LLC
Dallas, (TX)
USA
P: (+1) 833-882-4255
E: americas@lightprogress.it
W: www.lightprogress.us

OFFICIALLY DISTRIBUTED BY:

POWER SUPPLY OPTIONS AND CONTROL BOARDS



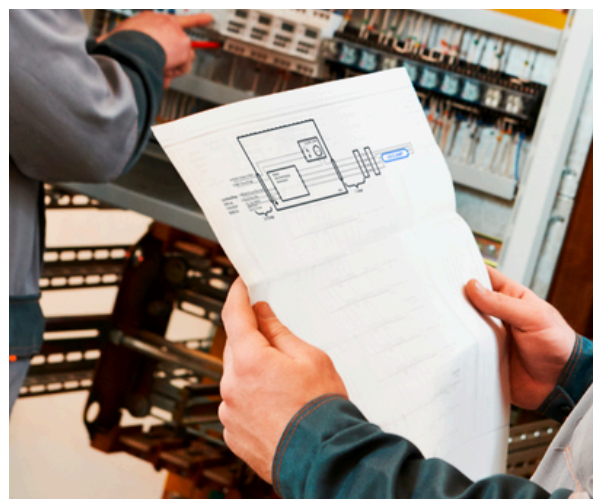
FEATURE	DESCRIPTION	SUPPLY BOX "BA"	CONTROL BOARD «MASTER-STY»
POWER OUTPUT	One Ballast for each UVC device	YES	YES
FAULTY LAMP ALARM	Alarm LED indicator	-	YES
	Dry contact output (to be externally powered - up to 24 V, 500 mA -, which can be used to activate a relay or any other diagnostic related device, or external BMS)	YES	YES
EXHAUST LAMP ALARM	Alarm LED indicator	-	YES
	Dry contact output (see above)	-	YES
LAMP LIFE HOUR COUNTER	Digital display	-	YES
POWER SWITCH	Low voltage input contact from BMS or Safety System	-	YES
SYNOPTIC VIEW	Synoptic LED Schema	-	YES
MULTI DEVICE	Management of more than one device	-	YES
POWER SUPPLY CABLE	Cable to main power supply	length 2.5 m (5x1 mm ²)	-
PROTECTION	IP rating	IP55	Up to 4 devices: IP66/67 Up to 8/12 devices: IP45

LAMP DIAGNOSTIC AND SYSTEM MANAGEMENT

Timely detection of lamp malfunctions, for prompt maintenance and minimizing downtime.

The **Supply Box "Ba"** power supply, is equipped with an alarm board that provides an output signal if the UVC lamp encounters any operational issues. This diagnostic output signal is a dry contact that **can be connected to an existing control panel and BMS**.


The **Control Board** allows the management of multiple UVC devices in a single unit, with UVC lamp diagnostic output signals if the UVC lamps encounters any operational issue or its lifetime is expired. It also includes a safety switch to turn on/off the system remotely. The diagnostic output signals and the safety switch **can be connected to an existing control panel and BMS**.



These comprehensive systems ensures **efficient operation, timely maintenance, and enhanced safety**, making it an invaluable tool for managing UVC lamp functionality.

 **Light Progress Group SRL**
Anghiari (AR)
ITALIA
P: (+39) 0575 749255
E: info@lightprogress.it
W: www.lightprogress.it

 **Light Progress GmbH**
Aschaffenburg (BY)
DEUTSCHLAND
P: +49 176 761 42327
E: gmbh@lightprogress.de
W: www.lightprogress.de

 **Light Progress LLC**
Dallas, (TX)
USA
P: (+1) 833-882-4255
E: americas@lightprogress.it
W: www.lightprogress.us

OFFICIALLY DISTRIBUTED BY: