



## UNRIVALED EFFECTIVENESS, UNMATCHED DURABILITY

UV-WATER devices can provide effective **inactivation of a wide range of viruses and bacteria** in water.

All products **comply with the regulations** of EC safety and D.M. 174/2004 concerning materials suitable for contact with water for human consumption.

The use of UVC allows a disinfection process which **does not affect smell, taste and pH** of the treated water.



## KEY PRODUCT FEATURES

- **Made for the Task**, this special form factor has been designed and developed to maximize penetration of UVC light inside water.
- **Increased Disinfection Performance**, with High-Output UV-C lamps (253,7 nm), and up-to 4 lamps in one device to treat larger water flows, continuously.
- **Quartz sleeve**, containing the UVC lamp serves to thermally and hydraulically isolate the UV-C bulb, creating optimal conditions for water purification.
- **UVLON™ “shatterproof” protective sleeve always included** and applied to the Quartz, to prevent the release of glass fragments in the event of accidental Quartz breakage, while reducing biofilm formation and the need for routine maintenance.
- **Built to last**, with high-quality Stainless Steel AISI 316L, Made in Italy, and all materials are tested for resistance to intense UV-C rays.
- **Monitor Your Operation**, Supply Box and Control Board are equipped with Alarm Signals and Digital Hour Counters.



HEALTHCARE



HVAC



PROCESS  
INDUSTRY



HOSPITALITY



SHARED  
SPACES



PUBLIC  
VENUES



WELLNESS  
CENTRES



TRANSPORT

TECHNICAL TABLE	UV-WATER -21-Ba	UV-WATER -40H-Ba	UV-WATER -42-Ba	UV-WATER -90H-Ba	UVWATER -3/90H	UVWATER -4/90H
BEST USE	RESIDENTIAL	COMMERCIAL	RESIDENTIAL	COMMERCIAL	INDUSTRIAL	
REPLACEMENT LAMP	n°1 GH4-21W	n°1 GH4-40WH	n°1 GH9-42W	n°1 GH9-90WH	n°3 GH9-90WH	n°4 GH9-90WH
POWER CONSUMPTION	21W	40W	42W	90W	270W	360W
DIMENSIONS (WxHxD)	mm 590 x 503 x 123 (in 23 1/4" x 19 3/4" x 4 7/8")		mm 1060 x 964 x 130 (in 41 3/4" x 38" x 5 1/8")		mm 1030 x 168 x 238 (in 40 1/2" x 6 5/8" x 9 3/8")	
WATER FLOW RATE (30mJ/cm <sup>2</sup> UVT = 95%)	1.900 l/h (0,5 l/s) 8.4 gpm	3.200 l/h (0,9 l/s) 14 gpm	3.800 l/h (1 l/s) 16.7 gpm	8.000 l/h (2 l/s) 35 gpm	18.000 l/h (5 l/s) 79 gpm	24.000 l/h (7 l/s) 106 gpm
WEIGHT	kg 3 lb 6.61		kg 5 lb 11.02		kg 10 lb 22.04	kg 12 lb 26.45
IN / OUT (ISO 228.1)	3/4" GAS (BPSP)		1" GAS (BPSP)		2" GAS (BPSP)	
	FOR ALL MODELS				FOR ALL MODELS	
LAMP LIFE *	365 days				9000 hours	
OPERATING PRESSURE	bar 8 (800 KPa) 117 PSI				bar 8 (800 KPa) 117 PSI	
PROTECTION RATING	IP 20				IP 20	
OP. TEMPERATURE**	MIN. -15°C ÷ MAX. +40°C   (MIN. 5.0°F ÷ MAX. +104.0°F)				MIN. -15°C ÷ MAX. +40°C (MIN. 5.0°F ÷ MAX. +104.0°F)	
OP. RELATIVE HUMIDITY**	From 20 to max. 90%				From 20 to max. 90%	
POWER SUPPLY	Supply Box "Ba"				Control Board "Master -Water"	

\* Useful life can be substantially reduced by several environmental or technical factors

\*\* Outside of these ranges, performance may not be optimal

## TROUBLE-FREE INTEGRATION AND INSTALLATION



- We provide the optimal point of integration for every product without requiring changes to your system.
- Mounting and powering the device can be done without complex requirements.
- Ongoing maintenance only takes a few minutes to replace lamps when necessary.

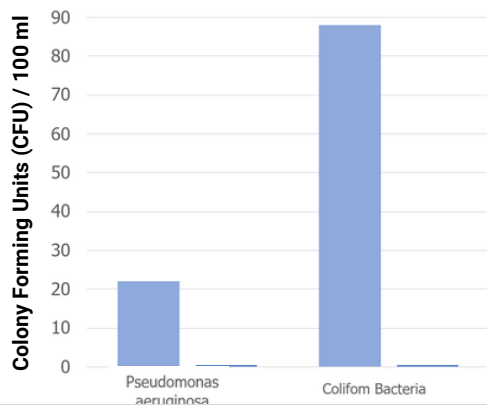
## TECHNICAL DRAWINGS

Every Light Progress Product is available in detailed DWG and STEP files for your design-in and specification clarity.

VIEW or DOWNLOAD now



## MICROBIAL TESTS AND EFFICACY



■ Before UV  
■ After UV



### Microbial reduction after UV treatment

Light Progress customers rely on our extensive history of third party testing and proven efficacy to meet any level of disinfection validated against literally any virus or microorganism.

We understand your need to meet Regulatory Requirements and Industrial Standards as we help you achieve microbial load reduction using our UV systems.

**Light Progress Group SRL**  
Anghiari (AR)  
ITALIA  
P: (+39) 0575 749255  
E: info@lightprogress.it  
W: www.lightprogress.it

**Light Progress GmbH**  
Aschaffenburg (BY)  
DEUTSCHLAND  
P: +49 176 761 42327  
E: gmbh@lightprogress.de  
W: www.lightprogress.de

**Light Progress LLC**  
Dallas, (TX)  
USA  
P: (+1) 833-882-4255  
E: americas@lightprogress.it  
W: www.lightprogress.us

**OFFICIALLY DISTRIBUTED BY:**

<b>CONTROL BOARDS</b>		
	<b>SUPPLY BOX «Ba»</b>	<b>CONTROL BOARD «MASTER-WATER»</b>

<b>MAIN FEATURES</b>
----------------------

MODEL	Ba-H-42		Ba-H-90H		MASTER-WATER 3/90H	MASTER-WATER 4/90H
COMPATIBLE UVC DEVICE (W)	UV-WATER -21-Ba	UV-WATER -42-Ba	UV-WATER -40H-Ba	UV-WATER -90H-Ba	UVWATER -3/90H	UVWATER -4/90H
CONTROL OF MULTIPLE DEVICES	-				-	
FAULTY LAMP ALARM	LED indicator Acoustic alarm				LED indicator Dry contact output * (up to 24V-500mA)	
EXHAUST LAMP ALARM	LED indicator Acoustic alarm				LED indicator	
LAMP LIFE HOUR COUNTER	Digital Display				Digital Display	
SAFETY INPUT contact from BMS or Safety System	-				-	
SYNOPTIC SCHEME	-				LED indicator	
POWER CABLE connection to the mains	Cable (3x1 mm <sup>2</sup> ) lenght 1,5 m (in.4' 11), with IEC plug (SCHUKO/other)				Cable (3x1 mm <sup>2</sup> ) lenght 2 m (in.6' 6 ¾), with IEC plug (SCHUKO/other)	
CONNECTION PLUG on lamp side	Cable lenght 1,5 m (in. 4' 11)				Cable lenght 3 m (in. 9' 10 ¾)	
INSTALLATION Mounting options	Screws (not included)				Screws (not included)	

<b>TECHNICAL FEATURES</b>
---------------------------

MODEL	Ba-H-42		Ba-H-90H		MASTER-WATER 3/90H	MASTER-WATER 4/90H
ELECTRONIC CONTROL GEARS ON BOARD	1				3	4
DIMENSIONS (mm) (W x H x D)	200x80x57				326x410x125	
DIMENSIONS (in) (W x H x D)	7 7/8" x 3 1/8" x 2 1/4"				12 7/8" x 16 1/8" x 4 7/8"	
HOUSING MATERIAL	ABS				ABS	
OPERATING TEMPERATURE**	min. -15°C ÷ max. +40°C  (min. 5.0°F ÷ max. +104.0°F)				min. -15°C ÷ max. +40°C  (min. 5.0°F ÷ max. +104.0°F)	
PROTECTION	IP 20				IP 55	
V AC   FREQUENCY	110V-230V 50/60 Hz				230V or 110V 50/60 Hz	

\* Dry contact output to be externally powered - to activate an external diagnostic system (BMS, MMS, SCADA, DCS, PLC)

\*\* Outside of these ranges, performance may not be optimal